

UPPER WALL FRAME LAYOUT

CEILING HEIGHT - 2700mm

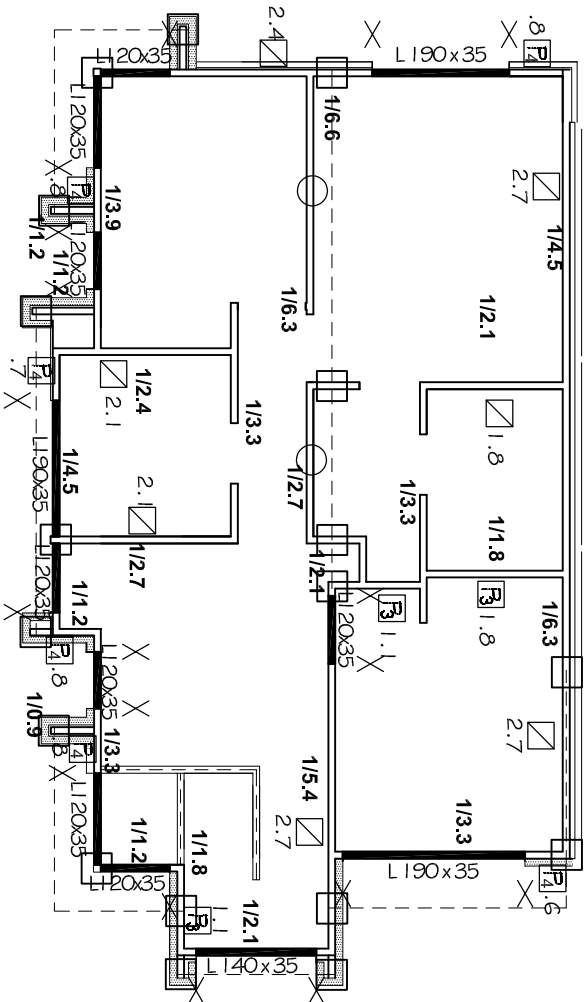
STRUCTURAL DETAILS

- T # B PLATES 90x35 MGP10 UNO
- EXTERNAL STUDS 90x35 MGP10 @ 600 CTS UNO
- STUDS POSITIONED DIRECTLY BENEATH RAFTER/TRUSSES @ MAX 600MM CTS
- INTERNAL STUDS 90x35 MGP10 @ 600 CTS UNO
- STRUTS BLOCKED OVER 2 SINGLE 90x45 MGP10 STUDS BLOCKING 90x70 MGP10
- NOGGING 90x35 PINE @ 1350 MAX CTS
- 1/90x35 MGP10 DIRECTLY BENEATH INTERNAL SUPPORT
- ALL STRUCTURAL MATERIAL TO BE MGP10, UNO.
- ALL MATERIALS ALLOWED AS PER AS 1684.2-2010


NON-LOAD BEARING WALLS UNDER TRUSSES SET DOWN 20mm

STUDS AT SIDES OF OPENINGS AND POINT LOAD STUDS AS SHOWN BELOW

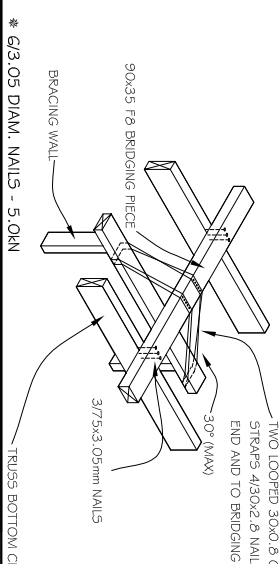
- △ = 1/90x45 MGP10
- X = 2/90x35 MGP10
- = 2/90x45 MGP10



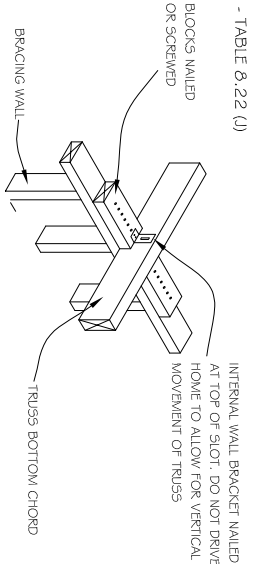
DWELLING 1

D'ANDREA	D'ANDREA 541 ANZAC HWY, GLENELG EAST	AMENDMENTS 	SHEET 3/5		OAKRIDGE BUILDING SERVICES PH : 83837222 FAX : 83837225	WINDSPEED (per residence) :	N I
			DATE : 25/05/18			W1	39 m ² = 22 kN
	SCALE: 1 : 100			W2		19 m ² = 11 kN	
	JOB No.						
	TT09727						
Detailer: Matt Opie Signed: 							

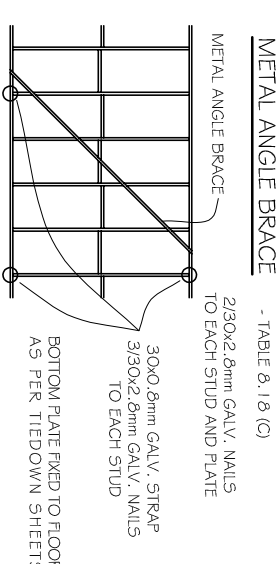
TOP PLATE FIXING DETAILS - PARALLEL TO WALL



TOP PLATE FIXING DETAILS - PERP. TO WALL



BRACING UNITS



□ - 1800mm (2.7kN)	□ - 2100mm (3.15kN)
□ - 2400mm (3.6kN)	□ - 2700mm (4.05kN)

OS BRACE TYPE #3 SYSTEM 6.0kN/m OR EQUIVALENT	FASTENER SPACING
	- 40mm TOP & BOTTOM PLATES
	- 150mm VERTICAL EDGES
	- 300mm INTERMEDIATE STUDS
	- MINIMUM SECTION OF BRACING OF 900mm
	- 2mm DRAGON GAP AROUND PERIMETER OF EVERY PANEL
	- 2.8x30mm FLAT HEAD GALVANISED OR CORROSION RESISTANT NAILS, OR THEIR GUN DRIVEN EQUIVALENT, MINIMUM OF 15mm FROM EDGE OR 8mm WHERE PANELS ARE FIXED TO INTERNAL FRAMING

□ - 900mm (5.4kN)	□ - 1200mm (7.2kN)
-------------------	--------------------

OS BRACE TYPE #4 SHORT WALL BRACING SYSTEM 2.2kN/m OR EQUIVALENT	FASTENER SPACING
	- 80mm TOP & BOTTOM PLATES
	- 150mm VERTICAL EDGES
	- M10 x 70mm COACH SCREWS WITH 50x50x3mm WASHERS IN EACH CORNER OF EACH SHEATHED SHORT WALL SECTION
	- MINIMUM SECTION OF BRACING OF 450mm
	- 2mm DRAGON GAP AROUND PERIMETER OF EVERY PANEL
	- 2.8x30mm FLAT HEAD GALVANISED OR CORROSION RESISTANT NAILS, OR THEIR GUN DRIVEN EQUIVALENT, MINIMUM OF 15mm FROM EDGE OR 8mm WHERE PANELS ARE FIXED TO INTERNAL FRAMING

□ - 450mm (1.0kN)	□ - 600mm (1.3kN)
-------------------	-------------------

ADDITIONAL ANGLE BRACE

WINDSPEED (per residence) :

W1	39 m ² =	22 kN
W2	19 m ² =	11 kN